

THE04

**Plantagini maritimae-
-Caricetum flaccae**

Novák in Chytrý 2007 ass. nova*

Suché trávníky
s jitrocelem přímořským

Tabulka 11, sloupec 4

Nomenklatorický typ (holotypus): Truzenice u Velemyšlevsi, 200 m SSZ od okraje obce, sezonní prameniště na úpatí svahu tvořeného miocénním jílovcem, 250 m n. m., 13°34'56"E, 50°23'85"N, orientace J, sklon 3°, plocha 16 m², pokryvnost E₁ 75%, E₀ 10%, zapsal J. Novák, 2. 6. 2004.

Carex flacca 3, *Agrostis gigantea* 2a, *Plantago maritima* 2a, *Tetragonolobus maritimus* 2a, *Carex distans* 1, *Festuca pratensis* 1, *Leontodon hispidus* 1, *Odontites vernus* 1, *Ononis spinosa* 1, *Potentilla reptans* 1, *Prunella vulgaris* 1, *Agrimonia eupatoria* +, *Aster linosyris* +, *Briza media* +, *Centaureum pulchellum* +, *Daucus carota* +, *Inula britannica* +, *Juncus inflexus* +, *Linum catharticum* +, *Centaurea jacea* r, *Dactylis glomerata* r, *Festuca rupicola* r, *Plantago lanceolata* r.

Diagnostické druhy: ***Agrimonia eupatoria***, ***Agrostis gigantea***, ***Carex distans***, ***C. flacca***, ***C. tomentosa***, ***Centaurea jacea***, ***Galium verum*** agg., ***Inula britannica***, ***Ononis spinosa***, ***Plantago maritima***, ***Prunella grandiflora***, ***Tetragonolobus maritimus***

Konstantní druhy: *Achillea millefolium* agg., ***Agrimonia eupatoria***, ***Agrostis gigantea***, *Brachypodium pinnatum*, *Bromus erectus*, ***Carex distans***, ***C. flacca***, *C. tomentosa*, ***Centaurea jacea***, *Festuca rupicola*, ***Galium verum*** agg., *Inula britannica*, *Linum catharticum*, *Ononis spinosa*, ***Plantago maritima***, *P. media*, *Prunella grandiflora*, ***Tetragonolobus maritimus***

Dominantní druhy: *Agrostis gigantea*, *Bromus erectus*, ***Carex flacca***

Formální definice: skup. ***Carex flacca*** AND skup. ***Plantago maritima***



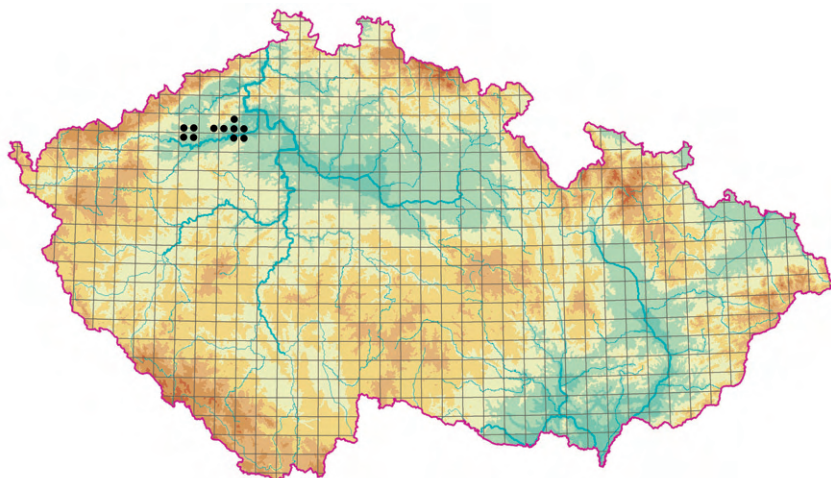
Obr. 240. *Plantagini maritimae-Caricetum flaccae*. Suchý trávník s jitrocelem přímořským (*Plantago maritima*) u Škrle na Chomutovsku. (J. Novák 2003.)

Fig. 240. Dry grassland with *Plantago maritima* near Škrle, Chomutov district, northern Bohemia.

Struktura a druhové složení. Jde o rozvolněné i zapojené trávníky s dominancí nebo hojným výskytem ostřice oddálené a chabé (*Carex distans*, *C. flacca*), sveřepu vzpřímeného (*Bromus erectus*), jitrocele přímořského (*Plantago maritima*) nebo psinečku velikého (*Agrostis gigantea*). Pokryvnost obvykle dvouvrstevného bylinného patra, která nejčastěji dosahuje 50–90 %, bývá ovlivněna intenzitou sedimentace a eroze půd. Druhová bohatost se většinou pohybuje v rozpětí 15–25 druhů cévnatých rostlin na ploše 16–25 m². V místech, kde se již méně uplatňuje vliv drobných průsaků a eroze půdy, se prosazují konkurenčně silnější druhy, které jsou typičtější pro asociaci *Scabioso ochroleucae-Brachypodietum pinnati*. Druhovým složením tato asociace tvoří přechod k subhalofilní vegetaci. Charakteristickým znakem je přítomnost fakultativně halofilních druhů *Plantago maritima* a *Tetragonolobus maritimus*, místy také *Centaureum pulchellum*. Výška porostu se pohybuje v rozmezí 30–100 cm. Mechové patro chybí nebo je jen slabě vyvinuto.

Stanoviště. Asociace je vázána na oblast srážkového stínu v severozápadních Čechách. Tato oblast má kontinentální klima s průměrnou roční tep-

*Zpracoval J. Novák



Obr. 241. Rozšíření asociace THE04 *Plantagini maritimae-Caricetum flaccae*.

Fig. 241. Distribution of the association THE04 *Plantagini maritimae-Caricetum flaccae*.

lotou nad 8,5 °C a nejnižším ročním srážkovým úhrnem v České republice (450–490 mm). Vegetace se vyskytuje v blízkosti pramenů, na dnech roklí a na úpatích jižně až jihozápadně orientovaných svahů, v nadmořských výškách pod 300 m. Podkladem jsou měkké druhohorní či třetihorní jílovce a slínovce a podsvahová deluvia. Půdním typem jsou pelozemě nebo pararenziny, které jsou charakteristické slabě vyvinutým humusovým horizontem. Půda je po většinu roku vlhká, ale v srpnu a září vysychá, hluboce rozpučká a na povrchu se často vytváří tvrdá křusta.

Dynamika a management. *Plantagini-Caricetum flaccae* je odvozeno od společenstev rozšířených v pozdním glaciálu v kontinentálních stepích nížin a pahorkatin střední Evropy (Ložek 1973). Vegetace je silně ovlivněna sezonními změnami půdní vlhkosti, které se výrazně projevují v srpnu až září, kdy může dojít k hlubokému rozpučení půdního povrchu a tvorbě povrchové křusty. Především v jarních měsících je společenstvo značně ovlivňováno erozí půdy. V minulosti byla tato vegetace spásána převážně ovci a kozami. V místech s menší intenzitou sedimentace a eroze půd na neobhospodařovaných pozemcích se může šířit *Calamagrostis epigejos*.

Rozšíření. Asociace je rozšířena v oblasti srážkového stínu v severozápadních Čechách na Žatecku, Lounsku a Libochovicku (Novák, nepu-

bl.). Z okolních zemí není podobná vegetace udávána, může se však vyskytovat na Slovensku nebo v Maďarsku.

Hospodářský význam a ohrožení. V minulosti sloužila tato vegetace k pastvě. I když v současnosti nejsou tyto bývalé pastviny hospodářsky využívány, mají velký význam pro ochranu vzácných druhů rostlin a bezobratlých. Jsou ohroženy zejména zalesňováním a expanzí konkurenčně silných druhů rostlin.

Syntaxonomická poznámka. *Plantagini-Caricetum flaccae* je ekologicky zčásti podobná asociaci *Potentillo reptantis-Caricetum flaccae* Studnička 1980. Této poměrně široce pojaté asociaci však chybějí diagnostické druhy, a proto není v tomto přehledu akceptována.

■ **Summary.** This grassland is usually co-dominated by *Bromus erectus* and *Carex flacca*, with a remarkable participation of the halophyte *Plantago maritima*. It occurs in the warm, dry area of north-western Bohemia with less than 500 mm of annual precipitation. It is found on toe slopes covered by dry grasslands, in shallow depressions and near springs. Soils are heavy, clayey, developed over claystone, marl or colluvial sediments. They are wet in spring and early summer but dry out considerably in late summer. In the past this vegetation type has been extensively grazed by sheep and goats.

Tabulka 11. Synoptická tabulka asociací suchých trávníků (třída *Festuco-Brometea*, část 2: *Cirsio-Brachypodium pinnati*, *Bromion erecti*, *Koelerio-Phleion phleoidis*, *Geranion sanguinei* a *Trifolion medii*).

Table 11. Synoptic table of the associations of dry grasslands (class *Festuco-Brometea*, part 2: *Cirsio-Brachypodium pinnati*, *Bromion erecti*, *Koelerio-Phleion phleoidis*, *Geranion sanguinei* and *Trifolion medii*).

- 1 – THE01 *Scabioso ochroleucae-Brachypodietum pinnati*
 2 – THE02 *Cirsio pannonicum-Seslerietum caeruleae*
 3 – THE03 *Polygalo majoris-Brachypodietum pinnati*
 4 – THE04 *Plantagini maritimae-Caricetum flacca*
 5 – THF01 *Carlino acaulis-Brometum erecti*
 6 – THF02 *Brachypodio pinnati-Molinietum arundinaceae*
 7 – THG01 *Potentillo heptaphyllae-Festucetum rupicola*
 8 – THG02 *Avenulo pratensis-Festucetum valesiacae*
 9 – THG03 *Viscario vulgaris-Avenuletum pratensis*
 10 – THH01 *Trifolio alpestris-Geranietum sanguinei*
 11 – THH02 *Geranio sanguinei-Dictamnietum albi*
 12 – THH03 *Geranio sanguinei-Peucedanetum cervariae*
 13 – THIO1 *Trifolio medii-Agrimonetum eupatoriae*
 14 – THIO2 *Trifolio-Melampyretum nemorosi*

| Sloupec číslo | 1 | 2 | 3 | 4 | 5 | 6 | 7 | 8 | 9 | 10 | 11 | 12 | 13 | 14 |
|----------------------|-----|---|-----|---|----|----|----|----|----|----|----|----|----|----|
| Počet snímků | 151 | 8 | 126 | 3 | 72 | 22 | 52 | 14 | 14 | 54 | 11 | 35 | 43 | 29 |
| Počet snímků s údaji | | | | | | | | | | | | | | |
| o mechovém patře | 22 | 3 | 101 | 3 | 53 | 17 | 47 | 12 | 8 | 25 | 5 | 9 | 13 | 8 |

Bylinné patro

Cirsio pannonicum-Seslerietum caeruleae

| | | | | | | | | | | | | | | |
|----------------------------|----|-----|----|---|---|---|---|---|---|---|---|----|---|---|
| <i>Sesleria caerulea</i> | 5 | 100 | . | . | . | . | . | . | . | 6 | . | 3 | . | . |
| <i>Coronilla vaginalis</i> | 10 | 38 | . | . | . | . | . | . | . | . | . | 3 | . | . |
| <i>Salvia verticillata</i> | 26 | 50 | 15 | . | 4 | 5 | . | . | . | 9 | . | 9 | 7 | 3 |
| <i>Helianthemum canum</i> | 4 | 25 | . | . | . | . | . | . | . | . | . | . | . | . |
| <i>Anemone sylvestris</i> | 8 | 25 | 10 | . | 6 | 5 | . | . | . | 2 | . | 17 | . | 3 |

Polygalo majoris-Brachypodietum pinnati

| | | | | | | | | | | | | | | |
|------------------------------------|----|----|----|----|---|----|----|----|---|----|----|----|---|---|
| <i>Inula ensifolia</i> | . | . | 86 | . | . | 5 | . | . | . | 2 | . | 6 | . | . |
| <i>Aster amellus</i> | 5 | . | 69 | . | 1 | . | . | . | . | 7 | 9 | 11 | . | 3 |
| <i>Astragalus onobrychis</i> | 1 | . | 37 | . | . | . | . | 7 | . | . | . | 3 | . | . |
| <i>Chamaecytisus ratisbonensis</i> | 1 | 12 | 37 | . | 1 | 5 | 4 | . | . | 2 | . | 11 | . | 3 |
| <i>Aster linosyris</i> | 10 | . | 41 | 33 | . | . | 4 | 14 | . | 17 | 27 | 26 | . | . |
| <i>Linum tenuifolium</i> | 16 | 12 | 28 | 33 | . | . | . | . | . | . | . | 3 | 2 | . |
| <i>Chamaecytisus austriacus</i> | 1 | . | 17 | . | . | . | . | . | . | . | . | . | . | . |
| <i>Thymus glabrescens</i> | 1 | . | 29 | . | . | 5 | 4 | 21 | . | . | . | 6 | . | . |
| <i>Jurinea mollis</i> | 1 | . | 16 | . | . | . | . | . | . | . | . | . | . | . |
| <i>Achillea pannonica</i> | 1 | . | 30 | . | . | . | 6 | . | . | 6 | 9 | 20 | . | . |
| <i>Scabiosa canescens</i> | 13 | 12 | 33 | . | . | . | 13 | 14 | . | . | . | 6 | 2 | . |
| <i>Peucedanum alsaticum</i> | . | . | 18 | . | . | . | . | . | . | 2 | 9 | . | . | . |
| <i>Carex humilis</i> | 32 | 25 | 51 | . | 3 | 9 | 33 | 50 | . | 15 | 27 | 34 | 2 | 7 |
| <i>Elytrigia intermedia</i> | 2 | . | 31 | . | . | 32 | 2 | 7 | . | 15 | 9 | 20 | . | 3 |

Plantagini maritimae-Caricetum flacca

| | | | | | | | | | | | | | | |
|--------------------------|---|---|---|-----|---|---|---|---|---|---|---|---|---|---|
| <i>Plantago maritima</i> | 1 | . | . | 100 | . | . | . | . | . | . | . | . | . | . |
|--------------------------|---|---|---|-----|---|---|---|---|---|---|---|---|---|---|

Tabulka 11 (pokračování ze strany 437)

| Sloupec číslo | 1 | 2 | 3 | 4 | 5 | 6 | 7 | 8 | 9 | 10 | 11 | 12 | 13 | 14 |
|----------------------------------------------------|----|----|----|-----|----|-----|----|----|----|----|----|----|----|----|
| <i>Carex distans</i> | . | . | 1 | 100 | . | . | . | . | . | . | . | . | . | . |
| <i>Agrostis gigantea</i> | 13 | . | 1 | 100 | . | . | . | . | . | . | . | . | . | . |
| <i>Inula britannica</i> | 5 | . | . | 67 | . | . | . | . | . | . | . | 3 | . | . |
| <i>Carex flacca</i> | 36 | 25 | 10 | 100 | 10 | 32 | . | . | . | 2 | . | 14 | 14 | 3 |
| <i>Agrimonia eupatoria</i> | 35 | . | 8 | 100 | 21 | . | 2 | 14 | . | 2 | . | 26 | 37 | 14 |
| <i>Carex tomentosa</i> | 21 | . | 5 | 67 | 3 | 9 | . | . | . | 2 | . | 11 | 2 | 3 |
| <i>Centaurea jacea</i> | 60 | 62 | 14 | 100 | 35 | 50 | 12 | 7 | 7 | 17 | . | 26 | 35 | 3 |
| <i>Galium verum</i> agg. | 54 | . | 48 | 100 | 47 | 73 | 50 | 57 | 29 | 26 | 9 | 31 | 53 | 10 |
| Carlino acaulis-Brometum erecti | | | | | | | | | | | | | | |
| <i>Anthyllis vulneraria</i> | 16 | 25 | 18 | . | 46 | 18 | 10 | 7 | 7 | 4 | . | 11 | 7 | . |
| <i>Polygala comosa</i> | 14 | . | 2 | . | 28 | 5 | . | . | . | . | . | 17 | 7 | . |
| <i>Securigera varia</i> | 42 | 25 | 36 | . | 74 | 18 | 17 | 14 | 21 | 39 | 45 | 29 | 42 | 34 |
| <i>Carlina acaulis</i> | 5 | . | 36 | . | 44 | 36 | 33 | . | 7 | 4 | . | 11 | 23 | 3 |
| <i>Knautia arvensis</i> agg. | 56 | 25 | 44 | . | 72 | 55 | 27 | . | 43 | 17 | 9 | 31 | 63 | 28 |
| Brachypodio pinnati-Molinietum arundinaceae | | | | | | | | | | | | | | |
| <i>Trifolium rubens</i> | . | . | 1 | . | . | 82 | . | . | . | 2 | . | 3 | . | 3 |
| <i>Hypochaeris maculata</i> | . | . | 4 | . | . | 73 | . | . | 7 | . | . | 6 | . | . |
| <i>Potentilla alba</i> | 1 | . | 2 | . | . | 95 | . | . | . | 4 | . | 14 | . | 10 |
| <i>Lathyrus latifolius</i> | . | . | 8 | . | . | 59 | . | . | . | 2 | . | 3 | . | 7 |
| <i>Filipendula vulgaris</i> | 16 | . | 25 | . | 1 | 100 | 8 | . | . | 11 | 9 | 34 | 7 | 7 |
| <i>Primula veris</i> | 6 | 12 | 4 | . | 4 | 91 | . | . | 7 | 7 | 18 | 9 | 5 | 21 |
| <i>Carex montana</i> | 6 | . | 6 | . | 4 | 86 | . | . | . | 6 | . | 9 | . | . |
| <i>Pseudolysimachion orchideum</i> | . | . | 7 | . | . | 36 | . | . | . | . | . | . | . | 3 |
| <i>Serratula tinctoria</i> | 1 | . | . | . | . | 73 | . | . | . | 4 | . | 6 | . | 3 |
| <i>Trifolium montanum</i> | 14 | 12 | 19 | . | 15 | 82 | 10 | . | 14 | 6 | . | 23 | 5 | 10 |
| <i>Betonica officinalis</i> | 4 | . | 10 | . | 6 | 91 | . | . | . | 11 | 18 | 20 | 2 | 17 |
| <i>Melampyrum cristatum</i> | 1 | . | 2 | . | . | 41 | . | . | . | 4 | 9 | 3 | . | . |
| <i>Ranunculus polyanthemos</i> | 6 | . | 13 | . | 3 | 68 | . | . | . | 6 | 9 | 23 | 2 | 10 |
| <i>Traunsteinera globosa</i> | . | . | . | . | . | 27 | . | . | . | . | . | . | . | . |
| <i>Pulmonaria angustifolia</i> | . | . | . | . | . | 32 | . | . | . | . | . | . | . | 10 |
| <i>Genista tinctoria</i> | 5 | . | 18 | . | 8 | 77 | 8 | . | 7 | 20 | 9 | 14 | 12 | 3 |
| <i>Clematis recta</i> | 1 | . | . | . | 1 | 36 | . | . | . | 2 | 9 | 11 | . | 10 |
| <i>Scorzonera hispanica</i> | 3 | 12 | 5 | . | . | 32 | . | . | . | . | . | 6 | . | . |
| <i>Scorzonera purpurea</i> | . | . | . | . | . | 23 | . | . | . | . | . | 3 | . | . |
| <i>Trifolium alpestre</i> | 6 | . | 9 | . | 11 | 73 | 35 | 7 | 14 | 37 | 36 | 9 | 2 | 7 |
| <i>Inula salicina</i> | 18 | 25 | 7 | 33 | 4 | 50 | . | . | . | 6 | . | 17 | 2 | 7 |
| <i>Carex michelii</i> | 3 | . | 17 | . | . | 36 | . | . | . | . | . | . | . | . |
| <i>Laserpitium latifolium</i> | . | . | . | . | . | 23 | . | . | . | . | . | 3 | . | 3 |
| <i>Gymnadenia conopsea</i> | 2 | . | 1 | . | . | 32 | . | . | . | . | . | . | 2 | . |
| <i>Astragalus danicus</i> | 1 | . | 2 | . | . | 27 | . | . | . | . | . | 3 | . | . |
| <i>Pulmonaria mollis</i> | . | . | 2 | . | . | 27 | . | . | . | 4 | . | . | . | 3 |
| <i>Campanula cervicaria</i> | . | . | . | . | . | 14 | . | . | . | . | . | . | . | . |
| <i>Anacamptis pyramidalis</i> | . | . | . | . | . | 14 | . | . | . | . | . | . | . | . |
| <i>Lathyrus niger</i> | . | . | . | . | 1 | 50 | . | . | . | 2 | . | 3 | 2 | 7 |
| <i>Bromus erectus</i> | 39 | 25 | 20 | 67 | 8 | 59 | 8 | . | . | 9 | . | 9 | 2 | 14 |
| <i>Campanula persicifolia</i> | 1 | 12 | 2 | . | 10 | 64 | . | . | . | 13 | 9 | 9 | 7 | 10 |
| <i>Aquilegia vulgaris</i> | . | . | . | . | . | 23 | . | . | . | . | . | . | . | 3 |

Tabulka 11 (pokračování ze strany 438)

| Sloupec číslo | 1 | 2 | 3 | 4 | 5 | 6 | 7 | 8 | 9 | 10 | 11 | 12 | 13 | 14 |
|---------------------------------|----|----|----|----|----|----|----|---|---|----|----|----|----|----|
| <i>Hieracium bauhini</i> | 7 | . | 17 | . | 1 | 32 | 4 | . | . | 7 | 18 | 9 | . | . |
| <i>Tragopogon orientalis</i> | 8 | . | 6 | . | 4 | 36 | . | . | . | . | . | 9 | 5 | . |
| <i>Astrantia major</i> | . | . | . | . | . | 27 | . | . | . | 2 | . | . | . | 3 |
| <i>Colchicum autumnale</i> | 1 | . | . | . | . | 55 | . | . | . | 4 | . | . | . | 3 |
| <i>Anthericum ramosum</i> | 11 | 38 | 39 | . | 7 | 50 | 2 | . | 7 | 17 | 27 | 31 | . | 10 |
| <i>Valeriana stolonifera</i> | . | . | . | . | . | 18 | . | . | . | 6 | 9 | . | . | . |
| <i>Crepis praemorsa</i> | . | . | 1 | . | . | 14 | . | . | . | . | . | . | . | . |
| <i>Leontodon hispidus</i> | 54 | 25 | 29 | 33 | 43 | 77 | 13 | . | . | 2 | . | 11 | 19 | 3 |
| <i>Serratula lycopifolia</i> | . | . | . | . | . | 9 | . | . | . | . | . | . | . | . |
| <i>Allium carinatum</i> | . | . | . | . | . | 9 | . | . | . | . | . | . | . | 3 |
| <i>Chamaecytisus supinus</i> | . | . | 1 | . | 1 | 18 | . | . | . | 2 | . | 9 | . | . |
| <i>Stipa tirsia</i> | . | . | 2 | . | . | 14 | . | . | . | . | . | . | . | . |
| <i>Molinia caerulea</i> s. lat. | . | 12 | 1 | . | 3 | 64 | . | . | . | 2 | . | 6 | . | . |
| <i>Orchis ustulata</i> | 1 | . | . | . | . | 9 | . | . | . | . | . | . | . | . |
| <i>Campanula patula</i> | 1 | . | . | . | . | 59 | . | . | . | . | . | . | . | 3 |

Potentillo heptaphyllae-Festucetum rupicolae

| | | | | | | | | | | | | | | |
|-----------------------------------|---|---|----|---|----|----|----|----|----|---|----|---|---|---|
| <i>Pseudolysimachion spicatum</i> | 5 | . | 20 | . | . | . | 77 | 29 | 21 | 7 | 18 | 9 | . | . |
| <i>Trifolium campestre</i> | 3 | . | . | . | 12 | 23 | 42 | 29 | 14 | 2 | . | 3 | 2 | . |
| <i>Genista pilosa</i> | . | . | 1 | . | . | . | 29 | 14 | . | 2 | . | . | . | . |

Avenulo pratensis-Festucetum valesiaca

| | | | | | | | | | | | | | | |
|------------------------------------------------|----|----|----|---|---|----|----|-----|----|----|----|---|---|---|
| <i>Festuca valesiaca</i> | 1 | . | 13 | . | 1 | . | 19 | 100 | . | 9 | 27 | 3 | . | . |
| <i>Artemisia campestris</i> | . | . | 13 | . | . | . | 23 | 86 | 29 | 22 | . | 3 | . | . |
| <i>Verbascum phoeniceum</i> | . | . | . | . | . | . | 6 | 36 | . | . | . | . | . | . |
| <i>Eryngium campestre</i> | 30 | 25 | 38 | . | 4 | 5 | 50 | 86 | . | 7 | . | 9 | 2 | . |
| <i>Armeria vulgaris</i> subsp. <i>vulgaris</i> | . | . | . | . | . | . | 17 | 43 | 7 | 2 | . | . | . | . |
| <i>Sedum sexangulare</i> | 2 | 12 | 1 | . | 6 | . | 19 | 64 | 21 | 4 | 18 | . | 2 | . |
| <i>Linaria genistifolia</i> | . | . | 2 | . | . | . | 6 | 36 | . | 4 | . | . | . | . |
| <i>Poa bulbosa</i> | . | . | . | . | . | . | 2 | 36 | . | 2 | . | . | . | . |
| <i>Centaurea stoebe</i> | 4 | . | 20 | . | 6 | . | 52 | 79 | 21 | 13 | 18 | 6 | . | . |
| <i>Carex supina</i> | . | . | . | . | . | . | 10 | 29 | . | 2 | 9 | . | . | . |
| <i>Silene otites</i> s. lat. | 1 | . | 2 | . | . | . | 29 | 43 | . | 9 | . | . | . | . |
| <i>Seseli osseum</i> | . | 12 | 3 | . | . | . | 19 | 50 | . | 17 | 36 | . | . | . |
| <i>Medicago prostrata</i> | . | . | . | . | 1 | . | . | 14 | . | . | . | . | . | . |
| <i>Stipa capillata</i> | 3 | . | 12 | . | 1 | . | 10 | 43 | . | . | 9 | 6 | . | . |
| <i>Gagea bohemica</i> | . | . | . | . | . | . | . | 14 | . | . | . | . | . | . |
| <i>Medicago minima</i> | 1 | . | . | . | 1 | . | . | 21 | . | . | . | . | . | . |
| <i>Thymus pannonicus</i> | 3 | . | 16 | . | . | 18 | 6 | 36 | . | 2 | . | 9 | . | . |

Viscario vulgaris-Avenuletum pratensis

| | | | | | | | | | | | | | | |
|--------------------------|---|---|---|---|----|---|----|---|----|----|----|----|---|---|
| <i>Sedum reflexum</i> | . | . | . | . | 3 | . | 12 | . | 36 | 13 | 27 | . | . | . |
| <i>Cerastium arvense</i> | 3 | . | . | . | 17 | . | 27 | 7 | 50 | 2 | 27 | 14 | 5 | 3 |
| <i>Veronica verna</i> | . | . | . | . | . | . | 2 | 7 | 21 | . | . | . | . | . |

Geranio sanguinei-Dictamnenum albi

| | | | | | | | | | | | | | | |
|---------------------------------|---|---|---|---|---|---|---|---|---|----|-----|---|---|---|
| <i>Dictamnus albus</i> | . | . | 6 | . | . | . | . | . | . | 13 | 100 | 3 | . | . |
| <i>Cotoneaster integerrimus</i> | 1 | . | . | . | 1 | . | 2 | . | 7 | 13 | 45 | . | . | . |
| <i>Arabis glabra</i> | . | . | . | . | . | . | . | . | 7 | . | 27 | . | . | . |

Tabulka 11 (pokračování ze strany 439)

| Sloupec číslo | 1 | 2 | 3 | 4 | 5 | 6 | 7 | 8 | 9 | 10 | 11 | 12 | 13 | 14 |
|------------------------------------------------------------|----|-----|----|-----|----|-----|----|----|----|----|----|----|-----|-----|
| <i>Centaurea triumfettii</i> | 3 | . | 2 | . | 1 | 14 | . | . | 7 | 19 | 36 | 9 | 2 | . |
| <i>Arabis hirsuta</i> agg. | 1 | 12 | 4 | . | 6 | 14 | . | . | . | 11 | 36 | . | . | 3 |
| <i>Verbascum lychnitis</i> | . | . | 2 | . | 14 | . | 2 | 7 | 14 | 19 | 55 | . | 2 | . |
| <i>Linum austriacum</i> | 1 | . | . | . | . | . | . | . | . | . | 18 | . | . | . |
| <i>Stachys recta</i> | 3 | 25 | 19 | . | 3 | 5 | 2 | 7 | . | 39 | 55 | 17 | . | 3 |
| <i>Fragaria viridis</i> | 38 | 25 | 36 | . | 51 | 9 | 12 | 7 | 14 | 35 | 64 | 34 | 33 | 7 |
| <i>Galium glaucum</i> | 1 | 12 | 23 | . | 1 | 9 | . | . | . | 31 | 45 | 17 | . | . |
| <i>Melica transilvanica</i> | . | . | 1 | . | 3 | . | . | 14 | . | 28 | 36 | 6 | . | . |
| <i>Origanum vulgare</i> | 6 | . | 18 | . | 8 | . | . | . | . | 22 | 36 | 14 | 12 | 17 |
| <i>Stipa pennata</i> | 1 | . | 10 | . | . | . | 2 | . | . | 9 | 27 | . | . | . |
| Geranio sanguinei-Peucedanetum cervariae | | | | | | | | | | | | | | |
| <i>Medicago falcata</i> | 38 | . | 36 | . | 15 | 36 | 4 | 21 | . | 13 | . | 49 | 14 | 7 |
| Trifolio medii-Agrimonetum eupatoriae | | | | | | | | | | | | | | |
| <i>Trifolium medium</i> | 9 | . | . | . | 15 | 14 | . | . | . | 6 | . | 23 | 100 | 7 |
| Trifolio-Melampyretum nemorosi | | | | | | | | | | | | | | |
| <i>Melampyrum nemorosum</i> | 2 | . | 2 | . | 8 | 5 | . | . | . | 6 | . | 6 | 7 | 100 |
| Diagnostické druhy pro dvě a více asociací | | | | | | | | | | | | | | |
| <i>Cirsium acaule</i> | 82 | 88 | 1 | 33 | 7 | . | 2 | . | . | . | . | 17 | 5 | . |
| <i>Carlina vulgaris</i> s. lat. | 41 | 50 | 35 | . | 25 | 5 | 4 | . | . | 4 | . | 3 | 5 | . |
| <i>Scabiosa ochroleuca</i> | 69 | 50 | 67 | 33 | 29 | 5 | 15 | 14 | 14 | 9 | . | 29 | 5 | . |
| <i>Bupleurum falcatum</i> | 50 | 38 | 64 | . | 19 | 23 | 8 | 7 | . | 19 | 9 | 49 | 9 | 7 |
| <i>Tetragonolobus maritimus</i> | 25 | . | 2 | 100 | 1 | . | . | . | . | . | . | 3 | . | . |
| <i>Ononis spinosa</i> | 71 | 75 | 27 | 67 | 3 | 27 | . | . | . | . | . | 14 | 2 | . |
| <i>Sanguisorba minor</i> | 89 | 100 | 48 | 33 | 92 | 18 | 21 | 21 | 43 | 28 | 9 | 26 | 16 | . |
| <i>Linum catharticum</i> | 81 | 88 | 29 | 67 | 50 | 59 | 2 | . | . | 4 | 9 | 14 | 14 | 3 |
| <i>Potentilla heptaphylla</i> | 36 | 75 | 13 | . | 22 | 59 | 6 | . | . | 11 | . | 14 | 5 | 3 |
| <i>Festuca rupicola</i> | 76 | 38 | 75 | 67 | 47 | 82 | 46 | . | 36 | 24 | 36 | 60 | 23 | 14 |
| <i>Plantago media</i> | 70 | 25 | 56 | 67 | 51 | 68 | 17 | 7 | 7 | 9 | . | 31 | 16 | 3 |
| <i>Brachypodium pinnatum</i> | 88 | 75 | 85 | 67 | 79 | 82 | . | . | . | 46 | 64 | 74 | 58 | 34 |
| <i>Teucrium chamaedrys</i> | 22 | 62 | 53 | . | 14 | 9 | 15 | 43 | . | 33 | 45 | 23 | . | 10 |
| <i>Helianthemum grandiflorum</i> subsp. <i>obscurum</i> | 18 | 50 | 20 | . | 75 | 41 | 2 | . | 36 | 11 | 27 | 31 | 23 | 7 |
| <i>Cirsium pannonicum</i> | 4 | 25 | 6 | . | . | 100 | . | . | . | 4 | . | 11 | . | 3 |
| <i>Inula hirta</i> | 6 | 25 | 10 | . | . | 36 | . | . | . | 4 | 9 | 17 | . | . |
| <i>Viola hirta</i> | 28 | 50 | 41 | . | 25 | 64 | . | . | . | 24 | 18 | 29 | 19 | 28 |
| <i>Koeleria pyramidata</i> | 32 | 62 | 6 | . | 89 | 27 | 4 | . | 79 | 9 | . | 11 | 23 | 7 |
| <i>Thymus praecox</i> | 46 | 100 | 7 | . | 7 | . | 56 | 50 | 7 | 11 | 9 | 9 | 2 | . |
| <i>Asperula cynanchica</i> | 36 | 25 | 72 | . | 11 | 45 | 62 | 64 | 29 | 22 | 27 | 20 | . | . |
| <i>Centaurea scabiosa</i> | 47 | . | 80 | . | 76 | 41 | 6 | . | 7 | 19 | 18 | 46 | 19 | 10 |
| <i>Dorycnium pentaphyllum</i> s. lat. | 4 | . | 87 | . | . | 36 | 2 | . | . | . | 9 | 11 | . | 3 |
| <i>Polygala major</i> | 2 | . | 37 | . | 1 | 50 | . | . | . | . | . | 6 | . | . |
| <i>Thesium linophyllum</i> | 3 | . | 32 | . | . | 64 | 2 | . | 7 | 4 | . | 14 | . | 3 |
| <i>Campanula glomerata</i> | 10 | 12 | 34 | . | 4 | 86 | . | . | . | 6 | . | 17 | . | 3 |
| <i>Salvia pratensis</i> | 46 | 25 | 63 | . | 21 | 82 | 6 | 7 | . | 26 | 45 | 49 | 14 | 10 |
| <i>Onobrychis arenaria</i> | 8 | . | 19 | . | . | 23 | . | . | . | . | . | 3 | . | . |

Tabulka 11 (pokračování ze strany 440)

| Sloupec číslo | 1 | 2 | 3 | 4 | 5 | 6 | 7 | 8 | 9 | 10 | 11 | 12 | 13 | 14 |
|----------------------------------------|----|----|----|----|----|----|----|----|----|-----|----|-----|----|----|
| <i>Peucedanum cervaria</i> | 5 | . | 42 | . | 10 | 91 | . | . | . | 17 | 9 | 100 | . | 10 |
| <i>Prunella grandiflora</i> | 23 | 25 | 25 | 67 | 4 | 59 | 2 | . | . | 2 | . | 3 | 2 | . |
| <i>Potentilla tabernaemontani</i> | 7 | . | 1 | . | 64 | 14 | 10 | 7 | 93 | 4 | 9 | 11 | 9 | . |
| <i>Thymus pulegioides</i> | 11 | . | 6 | . | 67 | 41 | 12 | . | 86 | 26 | 36 | 29 | 7 | 7 |
| <i>Geranium sanguineum</i> | 3 | . | 12 | . | 3 | 77 | . | . | 7 | 100 | 27 | 17 | . | 14 |
| <i>Lathyrus pannonicus</i> | . | . | 1 | . | . | 23 | . | . | . | . | 18 | 3 | . | . |
| <i>Pyrethrum corymbosum</i> | 4 | 12 | 25 | . | 10 | 64 | 2 | . | 14 | 22 | 55 | 26 | 5 | 17 |
| <i>Avenula pratensis</i> | 14 | . | 28 | . | 4 | 18 | 87 | 50 | 14 | 4 | . | 3 | 7 | . |
| <i>Euphrasia stricta</i> | 1 | . | 1 | . | 7 | 5 | 35 | 21 | . | 2 | . | 3 | . | . |
| <i>Dianthus carthusianorum</i> s. lat. | 9 | 12 | 27 | . | 7 | 50 | 90 | 79 | 43 | 24 | . | 14 | . | . |
| <i>Potentilla arenaria</i> | 19 | 12 | 41 | . | 4 | . | 69 | 93 | 14 | 20 | 27 | 9 | . | . |
| <i>Rumex acetosella</i> | 1 | . | . | . | . | . | 69 | 86 | 57 | 7 | . | . | . | . |
| <i>Koeleria macrantha</i> | 9 | . | 44 | . | 4 | 18 | 60 | 93 | 14 | 22 | 18 | 29 | . | 3 |
| <i>Jasione montana</i> | . | . | . | . | 1 | . | 27 | 64 | 36 | 2 | . | . | . | . |
| <i>Agrostis vinealis</i> | 1 | . | . | . | . | 41 | 50 | 57 | 14 | 2 | . | . | 2 | . |
| <i>Pulsatilla grandis</i> | . | . | 13 | . | 1 | 23 | 27 | 21 | . | 2 | . | 6 | . | . |
| <i>Phleum phleoides</i> | 2 | . | 20 | . | 33 | 32 | 63 | 43 | 57 | 20 | 18 | 17 | 5 | . |
| <i>Hieracium pilosella</i> | 17 | 12 | 17 | . | 39 | . | 83 | 79 | 86 | 15 | . | 17 | . | . |
| <i>Trifolium arvense</i> | 1 | . | . | . | 6 | . | 46 | 43 | 43 | 9 | 9 | . | . | . |

Ostatní druhy s vyšší frekvencí

| | | | | | | | | | | | | | | |
|-----------------------------------------|----|----|----|----|----|----|----|----|----|----|----|----|----|----|
| <i>Euphorbia cyparissias</i> | 80 | 88 | 62 | . | 64 | 23 | 40 | 57 | 71 | 74 | 55 | 71 | 21 | 21 |
| <i>Achillea millefolium</i> agg. | 64 | 12 | 33 | 67 | 61 | 82 | 67 | 79 | 64 | 39 | 18 | 46 | 65 | 31 |
| <i>Pimpinella saxifraga</i> | 65 | 50 | 52 | . | 57 | 36 | 71 | 57 | 57 | 15 | 9 | 34 | 37 | 34 |
| <i>Lotus corniculatus</i> | 54 | 75 | 39 | 33 | 65 | 50 | 50 | 43 | 36 | 7 | . | 26 | 40 | 7 |
| <i>Poa pratensis</i> s. lat. | 34 | 25 | 32 | . | 69 | 55 | 38 | 14 | 50 | 33 | 36 | 43 | 51 | 48 |
| <i>Hypericum perforatum</i> | 30 | 12 | 28 | . | 46 | 27 | 79 | 79 | 64 | 44 | 45 | 40 | 37 | 28 |
| <i>Arrhenatherum elatius</i> | 28 | 25 | 20 | . | 43 | 68 | 40 | 43 | 29 | 31 | 27 | 49 | 58 | 55 |
| <i>Dactylis glomerata</i> | 38 | . | 37 | . | 33 | 91 | 2 | . | 14 | 17 | . | 20 | 37 | 55 |
| <i>Briza media</i> | 38 | . | 29 | . | 44 | 77 | 4 | . | . | 4 | . | 29 | 28 | 7 |
| <i>Plantago lanceolata</i> | 28 | . | 19 | . | 50 | 64 | 54 | 43 | 50 | 2 | . | 9 | 19 | . |
| <i>Galium mollugo</i> agg. | 17 | 12 | 6 | . | 49 | . | 6 | . | 29 | 26 | 9 | 23 | 49 | 7 |
| <i>Campanula rotundifolia</i> agg. | 15 | 12 | 18 | . | 39 | 5 | 33 | 7 | 36 | 7 | . | 11 | 21 | 7 |
| <i>Veronica chamaedrys</i> agg. | 11 | . | 4 | . | 19 | 50 | 13 | . | 14 | 13 | 18 | 9 | 37 | 52 |
| <i>Carex caryophylla</i> | 6 | . | 23 | . | 26 | 36 | 25 | 29 | 29 | . | . | 23 | 2 | 3 |
| <i>Leucanthemum vulgare</i> agg. | 21 | 12 | 6 | . | 28 | 64 | . | . | . | 11 | . | 11 | 12 | 3 |
| <i>Daucus carota</i> | 30 | . | 5 | 33 | 24 | . | 6 | 7 | . | 7 | . | 3 | 7 | 3 |
| <i>Taraxacum</i> sect. <i>Ruderalia</i> | 17 | . | 3 | 33 | 25 | 41 | 8 | . | . | 11 | . | 9 | 16 | 10 |
| <i>Agrostis capillaris</i> | 11 | . | . | . | 4 | 41 | 15 | 7 | 21 | 9 | . | 6 | 40 | 45 |
| <i>Festuca rubra</i> agg. | 11 | 25 | 1 | . | 14 | 41 | 4 | . | . | 6 | 9 | 9 | 28 | 59 |
| <i>Festuca ovina</i> | 3 | . | 2 | . | 14 | 5 | 52 | 7 | 50 | 15 | 9 | 14 | 12 | 7 |
| <i>Echium vulgare</i> | 5 | . | 8 | . | 15 | . | 25 | 43 | 14 | 28 | 27 | 6 | . | . |
| <i>Medicago lupulina</i> | 14 | 12 | 5 | . | 32 | 9 | 6 | . | . | 4 | . | 3 | 16 | . |
| <i>Vincetoxicum hirundinaria</i> | 1 | 12 | 16 | . | 1 | 5 | 4 | . | . | 39 | 36 | 17 | . | 3 |
| <i>Anthoxanthum odoratum</i> s. lat. | 5 | . | . | . | 6 | 41 | 42 | 14 | 14 | 13 | . | 3 | 5 | 7 |
| <i>Campanula rapunculoides</i> | 18 | 25 | 2 | . | 17 | . | . | . | . | 9 | . | 6 | 14 | 3 |
| <i>Seseli hippomarathrum</i> | 11 | 25 | 19 | . | 1 | . | 6 | 21 | . | 2 | 9 | 3 | . | . |
| <i>Senecio jacobaea</i> | 5 | . | 9 | . | 12 | 18 | 21 | 14 | . | 4 | . | . | 7 | . |
| <i>Veronica teucrium</i> | 7 | . | 5 | . | 8 | 23 | . | . | 7 | 15 | 9 | 23 | 7 | 7 |

Tabulka 11 (pokračování ze strany 441)

| Sloupec číslo | 1 | 2 | 3 | 4 | 5 | 6 | 7 | 8 | 9 | 10 | 11 | 12 | 13 | 14 |
|------------------------------------------------------|----|----|----|----|----|----|----|----|----|----|----|----|----|----|
| <i>Vicia cracca</i> | 13 | . | . | . | 15 | 18 | . | . | . | 4 | . | 3 | 21 | 10 |
| <i>Luzula campestris</i> agg. | 4 | . | . | . | 8 | 36 | 21 | . | 43 | 4 | . | 9 | 5 | 7 |
| <i>Fragaria vesca</i> | 6 | . | 3 | . | 6 | . | 6 | 7 | . | 4 | . | 11 | 28 | 17 |
| <i>Festuca pratensis</i> | 7 | . | 2 | . | 7 | 45 | . | . | . | 7 | . | 3 | 21 | 10 |
| <i>Trifolium pratense</i> | 13 | 12 | 4 | . | 7 | 50 | . | . | . | 2 | . | . | . | . |
| <i>Prunella vulgaris</i> | 16 | . | . | 33 | 12 | 23 | . | . | . | . | . | . | 2 | 10 |
| <i>Acinos arvensis</i> | 1 | 12 | 7 | . | 25 | . | 6 | . | . | 11 | 9 | 9 | . | . |
| <i>Potentilla argentea</i> | 3 | . | . | . | 8 | 5 | 27 | 36 | 29 | 6 | 9 | 9 | 2 | . |
| <i>Clinopodium vulgare</i> | 5 | 12 | 3 | . | 8 | . | . | . | . | 6 | . | 11 | 16 | 28 |
| <i>Avenula pubescens</i> | 4 | 12 | 4 | . | 12 | 45 | . | . | 7 | 2 | . | 9 | 7 | 3 |
| <i>Rosa canina</i> s. lat. | 9 | . | 2 | . | 4 | . | . | . | 7 | 15 | 27 | 14 | 2 | 7 |
| <i>Astragalus austriacus</i> | 9 | . | 20 | . | . | . | . | . | . | . | . | . | . | . |
| <i>Rumex acetosa</i> | 3 | . | 1 | . | 1 | 68 | 2 | . | 7 | 6 | . | 3 | 12 | 17 |
| <i>Lathyrus pratensis</i> | 6 | . | . | . | 7 | 36 | . | . | . | 6 | . | 3 | 19 | 7 |
| <i>Bothriochloa ischaemum</i> | 7 | . | 11 | . | . | 5 | 4 | 29 | . | 4 | . | 6 | . | . |
| <i>Trisetum flavescens</i> | 5 | . | . | . | 4 | 55 | . | . | . | 9 | . | 3 | 7 | 14 |
| <i>Sedum acre</i> | . | . | . | . | 24 | . | 15 | 14 | 21 | 7 | 9 | . | . | . |
| <i>Prunus spinosa</i> (E ₂) | 5 | . | 1 | . | 4 | . | . | . | 7 | 19 | 27 | 9 | 9 | 3 |
| <i>Rhinanthus minor</i> | 3 | . | 2 | . | 7 | 36 | 12 | . | 21 | . | 9 | . | 5 | 3 |
| <i>Sanguisorba officinalis</i> | 1 | . | 1 | . | 1 | 64 | . | . | . | 11 | . | 6 | 7 | 3 |
| <i>Fragaria moschata</i> | 1 | . | 1 | . | 1 | 23 | 2 | . | . | 9 | 9 | 14 | 2 | 24 |
| <i>Polygonatum odoratum</i> | . | . | 2 | . | . | 23 | . | . | . | 24 | 36 | 9 | . | 7 |
| <i>Hylotelephium telephium</i> agg. | 1 | . | 1 | . | 1 | . | 4 | 7 | 14 | 30 | 27 | 3 | . | . |
| <i>Ranunculus bulbosus</i> | 5 | 12 | 1 | . | 6 | 14 | 6 | . | 29 | 2 | . | . | 9 | . |
| <i>Vicia hirsuta</i> | 3 | 12 | 1 | . | 7 | 14 | 12 | . | 21 | 2 | . | 3 | 7 | . |
| <i>Poa nemoralis</i> | . | . | . | . | . | . | . | . | . | 17 | 36 | . | 9 | 21 |
| <i>Stellaria graminea</i> | 3 | . | . | . | 1 | 32 | . | . | . | 2 | . | . | 12 | 14 |
| <i>Hieracium murorum</i> | 8 | 25 | . | . | 3 | . | . | . | 7 | 6 | . | 3 | 2 | . |
| <i>Veronica prostrata</i> | 1 | . | 6 | . | . | . | 12 | 21 | 7 | . | . | . | . | . |
| <i>Potentilla erecta</i> | 1 | . | . | . | 1 | 41 | . | . | . | 2 | . | 3 | 9 | 7 |
| <i>Cerastium holosteoides</i> subsp. <i>triviale</i> | 3 | 12 | . | . | 3 | 36 | . | . | . | 2 | . | . | . | 10 |
| <i>Galium boreale</i> subsp. <i>boreale</i> | 2 | . | 1 | . | 3 | 23 | . | . | 7 | . | . | 9 | 2 | 7 |
| <i>Danthonia decumbens</i> | 1 | . | . | . | . | 23 | 10 | . | . | 2 | . | 6 | . | 3 |
| <i>Dianthus deltooides</i> | . | . | . | . | 4 | . | 2 | . | 29 | . | . | . | 16 | 3 |
| <i>Ajuga reptans</i> | 1 | . | . | . | 3 | 23 | . | . | . | 4 | . | . | 2 | 10 |
| <i>Cruciata glabra</i> | . | . | . | . | 1 | 27 | . | . | . | 6 | . | . | 2 | 10 |
| <i>Lilium martagon</i> | . | . | . | . | . | 23 | . | . | . | 6 | 18 | . | . | . |
| <i>Ranunculus auricomus</i> agg. | . | . | . | . | . | 27 | . | . | . | 2 | . | . | . | 7 |
| <i>Erophila verna</i> | 1 | . | . | . | 3 | . | 4 | 21 | 7 | . | . | . | . | . |

Mechové patro***Polygalo majoris-Brachypodietum pinnati****Campyliadelphus**chrysophyllus* 23 . 30 . . . 2 . . 4 . 11 . .***Avenulo pratensis-Festucetum valesiacae****Cladonia foliacea* . . 1 . 2 . 19 67 12 4*Cladonia pyxidata* . 33 . . 6 . 15 42 . 4 . . 8 .

Tabulka 11 (pokračování ze strany 442)

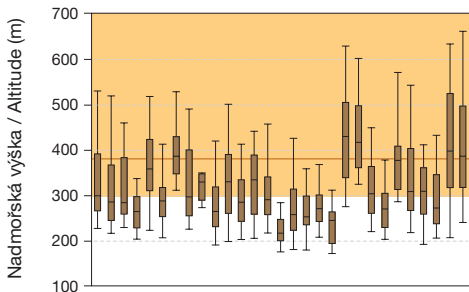
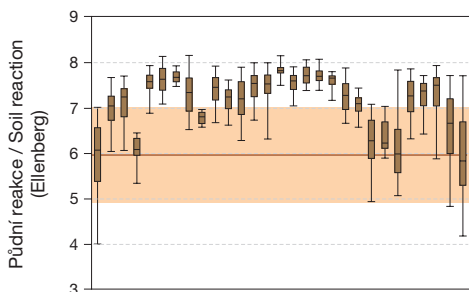
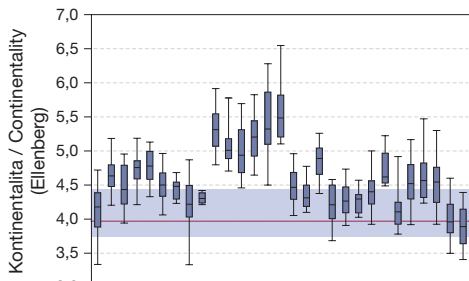
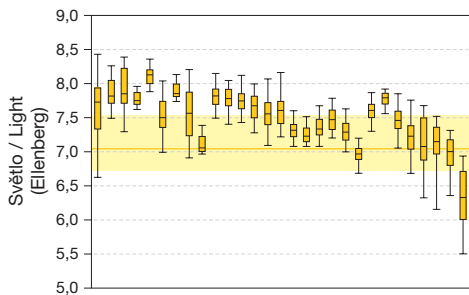
| Sloupec číslo | 1 | 2 | 3 | 4 | 5 | 6 | 7 | 8 | 9 | 10 | 11 | 12 | 13 | 14 |
|---------------------------------------------------|----|----|----|---|----|----|----|----|----|----|----|----|----|----|
| <i>Parmelia somloensis</i> | . | . | . | . | . | . | 2 | 33 | . | . | . | . | . | . |
| <i>Cladonia furcata</i> | . | 33 | . | . | 21 | . | 11 | 33 | 25 | 8 | . | . | . | . |
| <i>Parmelia pulla</i> | . | . | . | . | . | . | 4 | 25 | . | . | . | . | . | . |
| Viscario vulgaris-Avenuletum pratensis | | | | | | | | | | | | | | |
| <i>Lophozia excisa</i> | . | . | . | . | . | . | . | . | 12 | . | . | . | . | . |
| <i>Cetraria aculeata</i> | . | . | . | . | . | . | 4 | 17 | 25 | . | . | . | . | . |
| Diagnostické druhy pro dvě a více asociací | | | | | | | | | | | | | | |
| <i>Fissidens dubius</i> | 32 | . | 36 | . | 2 | 24 | . | . | . | . | . | 33 | . | . |
| <i>Rhytidiadelphus triquetrus</i> | . | 67 | 1 | . | 8 | 41 | . | . | . | . | . | . | . | . |
| <i>Homalothecium lutescens</i> | 27 | 33 | 47 | . | 13 | 53 | . | 17 | 12 | 8 | 20 | 22 | 23 | 25 |
| <i>Cladonia rangiformis</i> | . | 33 | . | . | 4 | . | 51 | 75 | . | 8 | 20 | . | . | . |
| <i>Polytrichum piliferum</i> | . | . | . | . | 2 | . | 32 | 58 | 50 | . | . | . | . | . |
| Ostatní druhy s vyšší frekvencí | | | | | | | | | | | | | | |
| <i>Thuidium abietinum</i> | 32 | 33 | 38 | . | 45 | 41 | 15 | 17 | 25 | 16 | . | 33 | 15 | . |
| <i>Hypnum cupressiforme</i> s. lat. | 23 | 67 | 12 | . | 30 | . | 57 | 75 | 38 | 36 | 80 | 11 | . | . |
| <i>Rhytidium rugosum</i> | 9 | 33 | 21 | . | 21 | 29 | 9 | 17 | . | 20 | 40 | 11 | . | . |
| <i>Ceratodon purpureus</i> | . | . | 2 | . | 15 | . | 45 | 67 | 62 | 12 | . | . | 8 | 12 |
| <i>Eurhynchium hians</i> | 18 | . | 23 | . | . | 6 | . | . | . | . | . | 33 | . | 12 |
| <i>Plagiomnium affine</i> s. lat. | 5 | 33 | 2 | . | 9 | 29 | 6 | . | 12 | 4 | . | 44 | 54 | 38 |
| <i>Fissidens taxifolius</i> | 9 | 33 | 15 | . | 6 | 6 | . | . | . | . | . | 22 | . | . |
| <i>Cladonia fimbriata</i> | . | . | . | . | 2 | . | 15 | 25 | . | 4 | 20 | 11 | 8 | . |
| <i>Syntrichia ruralis</i> | . | . | 3 | . | 8 | . | 2 | 25 | 12 | 4 | . | . | . | . |
| <i>Plagiomnium undulatum</i> | . | . | 1 | . | 6 | 24 | . | . | . | . | . | 11 | . | . |
| <i>Racomitrium canescens</i> | . | . | . | . | . | . | 2 | 17 | 25 | . | . | . | . | . |
| <i>Rhytidiadelphus squarrosus</i> | . | . | 1 | . | 6 | . | 2 | . | . | . | . | . | . | 25 |



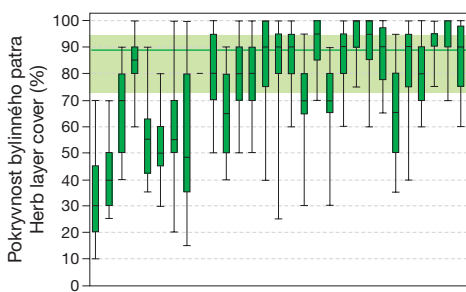
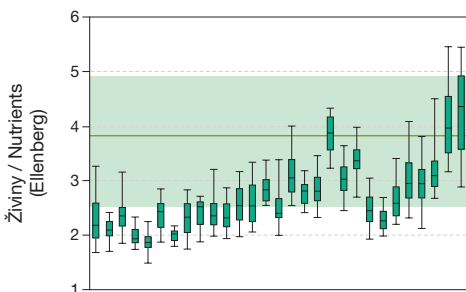
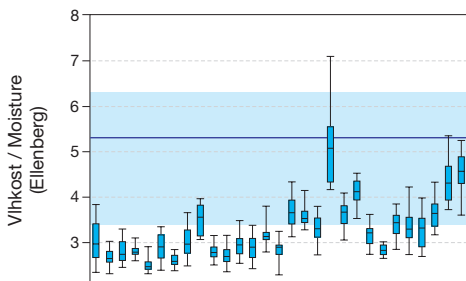
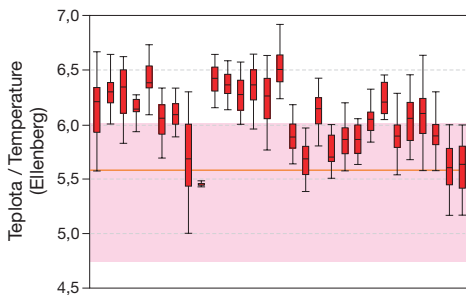
Obr. 207. Srovnání asociací vegetace suchých trávníků pomocí Ellenbergových indikačních hodnot, nadmořských výšek a pokryvnosti bylinného patra. Vysvětlení grafu viz obrázek 13 na str. 74.

Fig. 207. A comparison of associations of dry grassland vegetation through Ellenberg indicator values, altitude and herb layer cover. See Figure 13 on page 74 for explanation of the graph.

Suché trávníky (*Festuco-Brometea*)



- THA01 *Festuco pallentis*-*Auriniellum*
- THA02 *Sesuvio-Festucetum pallentis*
- THA03 *Sesuvio-Festucetum pallentis*
- THA04 *Helichyso-Festucetum pallentis*
- THB01 *Poa-Festucetum pallentis*
- THC01 *Carex humilis*-*Seslerietum*
- THC02 *Mnuaerio-Seslerietum*
- THC03 *Saxifrago-Seslerietum*
- THC04 *Asplenio-Seslerietum*
- THD01 *Erysimo-Festucetum valesiacae*
- THD03 *Festuco rupicola*-*Carex humilis*
- THD04 *Koelerio-Stipatum*
- THD05 *Stipatum trisetum*
- THE01 *Scabioso-Brachypodietum*
- THE02 *Cirsio pannonici-Seslerietum*
- THE03 *Polygalo-Brachypodietum*
- THE04 *Plantagini-Carex flacca*
- THE05 *Cerifolium-Brometum*
- THE06 *Baccharis-Festucetum valesiacae*
- THG01 *Potentillo-Festucetum valesiacae*
- THG02 *Avenulo-Festucetum valesiacae*
- THG03 *Viscario-Avenuletum*
- THH01 *Trifolio-Geranietum*
- THH02 *Geranio-Pauciflorietum*
- THH03 *Geranio-Pauciflorietum*
- THI01 *Trifolio-Agrimoniellum*
- THI02 *Trifolio-Melampyretum*



- THA01 *Festuco pallentis*-*Auriniellum*
- THA02 *Sesuvio-Festucetum pallentis*
- THA03 *Sesuvio-Festucetum pallentis*
- THA04 *Helichyso-Festucetum pallentis*
- THB01 *Poa-Festucetum pallentis*
- THC01 *Carex humilis*-*Seslerietum*
- THC02 *Mnuaerio-Seslerietum*
- THC03 *Saxifrago-Seslerietum*
- THC04 *Asplenio-Seslerietum*
- THD01 *Festuco valesiacae*-*Stipetum*
- THD02 *Erysimo-Festucetum valesiacae*
- THD03 *Festuco rupicola*-*Carex humilis*
- THD04 *Koelerio-Stipetum*
- THE01 *Scabioso-Crambetum*
- THE02 *Scabioso-Brachypodietum*
- THE03 *Cirsio pannonici-Seslerietum*
- THE04 *Polygalo-Brachypodietum*
- THE05 *Plantagini-Carex flacca*
- THE06 *Cerifolium-Brometum*
- THF02 *Brachypodio-Molinietum*
- THG01 *Potentillo-Festucetum rupicola*
- THG02 *Avenulo-Festucetum valesiacae*
- THG03 *Viscario-Avenuletum*
- THH01 *Trifolio-Geranietum*
- THH02 *Geranio-Dicamnetum*
- THH03 *Geranio-Pauciflorietum*
- THI01 *Trifolio-Agrimoniellum*
- THI02 *Trifolio-Melampyretum*